

OES-SD16/OES-SD24/OES-RD16

OPTICAL EDGE SYSTEM



Optical Technology and Flexible Design

Designed specifically to work with LiftMaster® Commercial Door Operators, the Optical Edge System delivers dependable monitored entrapment protection for commercial applications. The infrared optical sensors provide superior protection for sectional and rolling-style doors. With a NEMA 6 enclosure, it is the ideal solution for commercial doors with edges exposed to outside elements. Our photoelectric eyes and edge sensor models are UL/cUL Listed for use with all LiftMaster Commercial Door Operators. The Optical Edge System can be used as a primary and/or ancillary entrapment device and meets UL 325 2010 safety standards.

Monitored Optical Edge System

- Rubber door edge is durable, flexible and easy to install
- Premium rubber can be cut to exact length at the installation site
- NEMA 6 rating protects against moisture and allows edge to operate in standing water
- Infrared optical sensors eliminate the need for electrical contacts
- Maximum range of 33 feet

UL 325 requires all commercial door operators to be either constant pressure to close or be equipped with a primary external monitored entrapment protection device. The Optical Edge System meets this requirement. Failure to use the appropriate sensor or failure to install the sensor properly, may expose the installer and customer to liability, should an accident occur.

LiftMaster's full line of Monitored Photo Eyes



CPS-UN4

CPS-RPEN4

CPS-OPEN4

CPS-U

Available Accessories:



Rubber Sectional Door Edge (OES-SD50/OES-RD50)

These 50' rolls are the most cost-effective option for multiple installations.



Optical Edge Sensor Kit (OES-EDSR)

Kit includes infrared transmitter and receiver.



Junction Box (OES-JBOX)

Enables the connection between the operator and the edge.



2-Wire Coil Cord (OES-COIL)

Provides a flexible connection from the junction box to operator or switch.



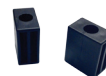
Conduit Installation Kit (OES-COND)

Eliminates the need for electrical conduit installation and includes junction boxes and cables.



Sectional Door Mounting Kit (OES-DECK)

Secures rubber edge to the door.



Rolling Door Mounting Kit (OES-RDCK)

Secures rubber edge to the door.

1-3/4" x 1-3/4" PVC Channel (OES-4504)

Connects the door to the edge kit. (sectional doors only)

2" x 2" PVC Channel (OES-5104)

Connects the door to the edge kit. (sectional doors only)

Each kit contains all components necessary* for installing the Optical Edge System
*Excluding PVC channel which is sold separately

OES-SD16/OES-SD24/OES-RD16

OPTICAL EDGE SYSTEM

SPEC SHEET

STANDARD SPECIFICATIONS

PRODUCT DESCRIPTIONS

OES-SD16 16' Sectional Door Edge Kit, 6.8lbs
OES-SD24 24' Sectional Door Edge Kit, 8.9lbs
OES-RD16 16' Rolling Door Edge Kit, 8.5lbs

CARTON

Dimensions:

- Height: 5"
- Width: 24"
- Length: 25"

Contents:

- 1 Roll of Rubber Door Edge
- 1 Pair Photo Sensors (Transmitter/Receiver)
- 1 Coil Cord
- 1 Junction Box
- 1 Door Edge Connection Kit
- Installation Instructions

WARRANTY

One year limited warranty

TECHNICAL SPECIFICATIONS

Maximum Alignment Range
10.2m/33ft.

Required Alignment

None, if instructions are followed

Min. Alignment Distance

36" (3 ft.)

Outdoor Rating

NEMA 6 for high-moisture
environments and standing
water

Temperature Range

(-25C to +70C)/(-4F to 158F)

Terminal Interface

Monitored 2-Wire (Polarized)

Color Code Sensors

Transmitter = Red LED

Receiver = Green LED

QUICK INSTALL GUIDE

PREPARE

Be sure to disconnect power to the operator BEFORE installing the Edge Kit.
The door MUST be in the fully opened or mid position before installing the
LiftMaster® Monitored Entrapment Device.

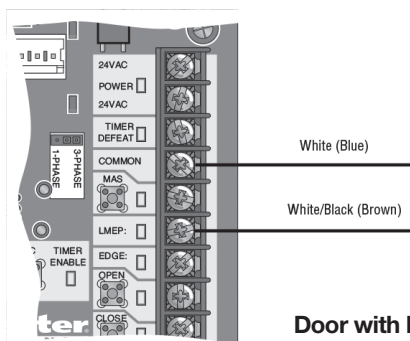
INSTALL

Correctly install, connect and test the photoelectric edge sensors for proper
operation. Install the photoelectric edge sensors on the closing or opening
edge of the sectional or rolling door.

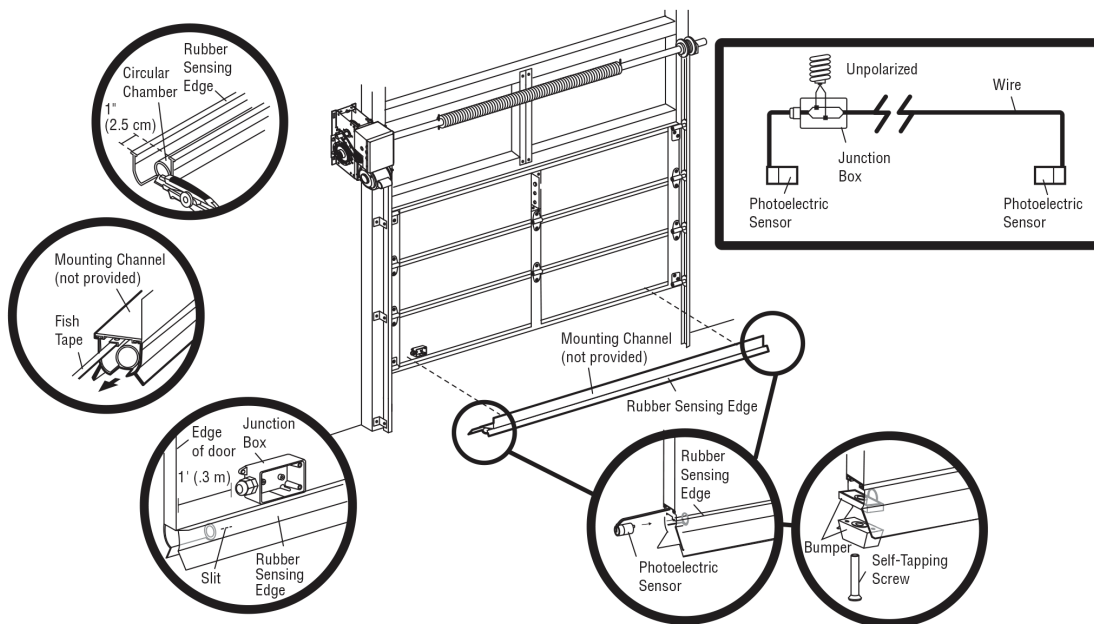
COMPLETE

Follow instructions to complete the installation before powering-up the
operator. Photoelectric door edge sensors must be at least 3 feet apart for
alignment verification.

Wiring Connections
(Logic 4 board shown)



Door with Edge installation shown
(See installation manual for complete
installation instructions).



JDT Garage Door Service

602-703-9582

info@jdtgaragedoor.com